

项目概况

Project Information



项目名称 Project Title

北京密云水库流域退化林恢复与经营项目

Project on Rehabilitation and Management of Degraded Forests in Miyun Reservoir Watershed, Beijing

项目整体目标 Project Goal

本项目通过水源林经营技术示范、林业社区居民生计改善及能力建设等措施，提高密云水库流域森林的多种功能，促进密云水库饮用水源地保护，并通过大都市水源地保护伙伴关系在国内推广项目创新的最佳森林经营模式与林业社区发展模式。

The project goal is to improve multi-functions of forest in the Miyun Reservoir Watershed through technical demonstration and transferring the BRMPs (Best Rehabilitation & Management Practices) summarized through the Partnership for Mega-city Watershed Protection (PMWP) in China.

项目具体目标 Project Objectives

A

通过近自然经营的方法，改善三个项目区森林的水源涵养功能。

To improve the water conservation capacity of the forests in three sites of the project by applying close-to-nature management approach.

B

降低项目区果园施肥所引起的水源污染。

To reduce water pollution caused by fertilizer application in the orchard selected.

C

通过发展森林游憩的方式，改善项目区当地社区的生计。

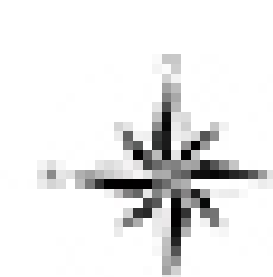
To improve the livelihood of the local community selected by promoting the development of forest recreation.

D

提高利益相关方森林经营方面的能力。

To enhance the capacity of relevant stakeholders in forest management in environment-friendly manner.

项目区位置 Project Sites



Project Sites Map



E

开发密云水库流域长期森林经营规划最佳实践模式。

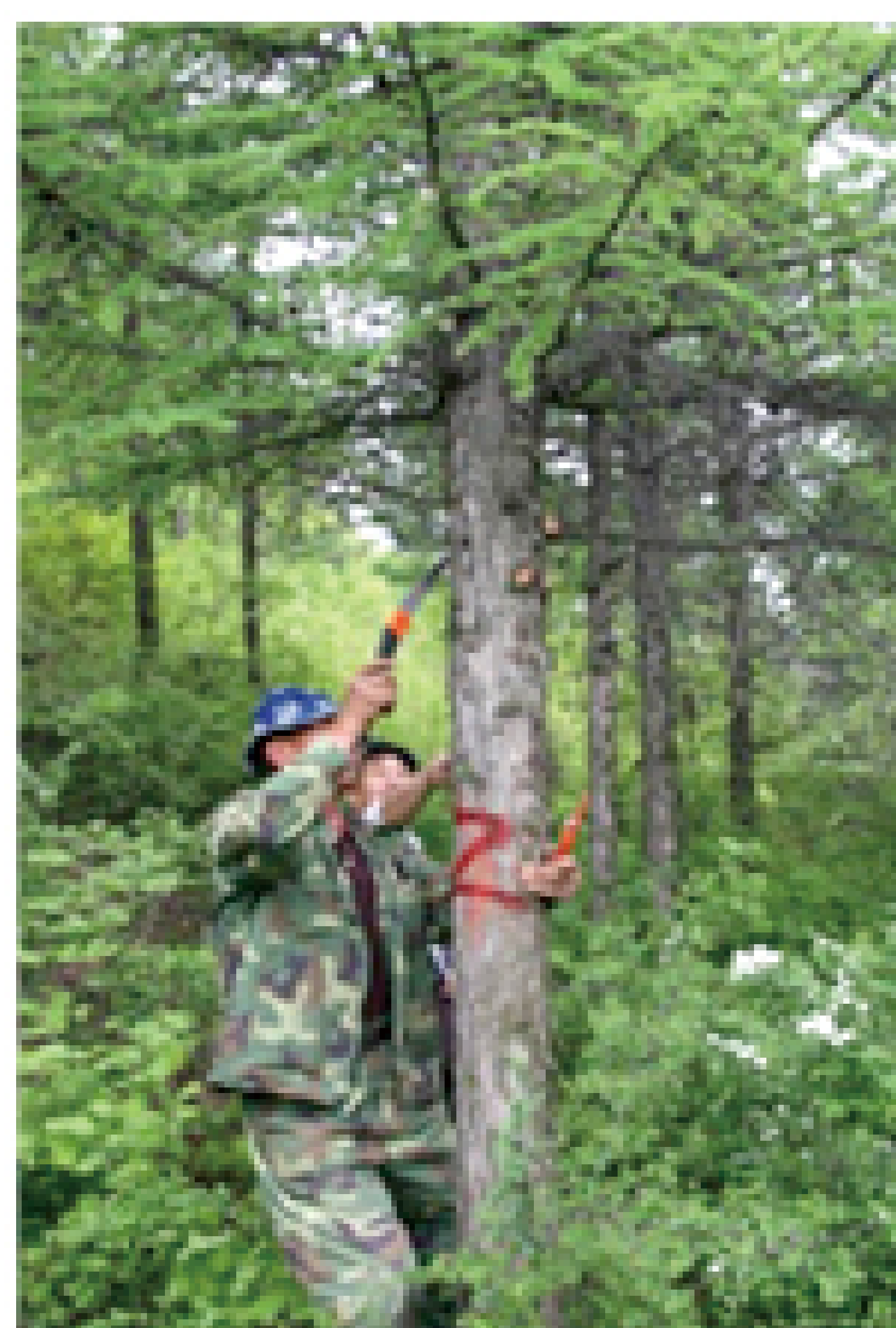
To produce best practice models for a better long-term forest management in the watershed.

项目概况

Project Information

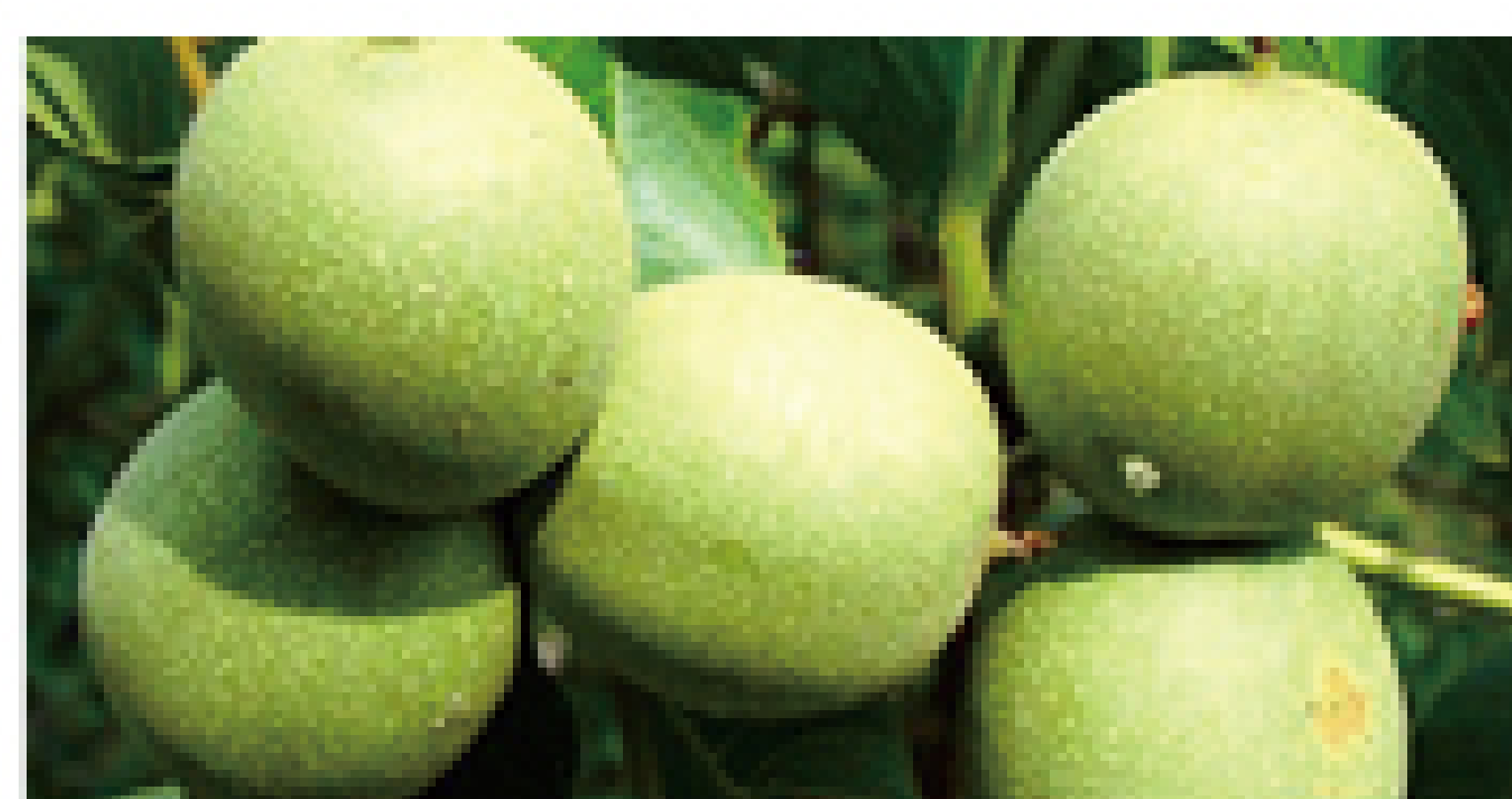


项目活动 Project Activities

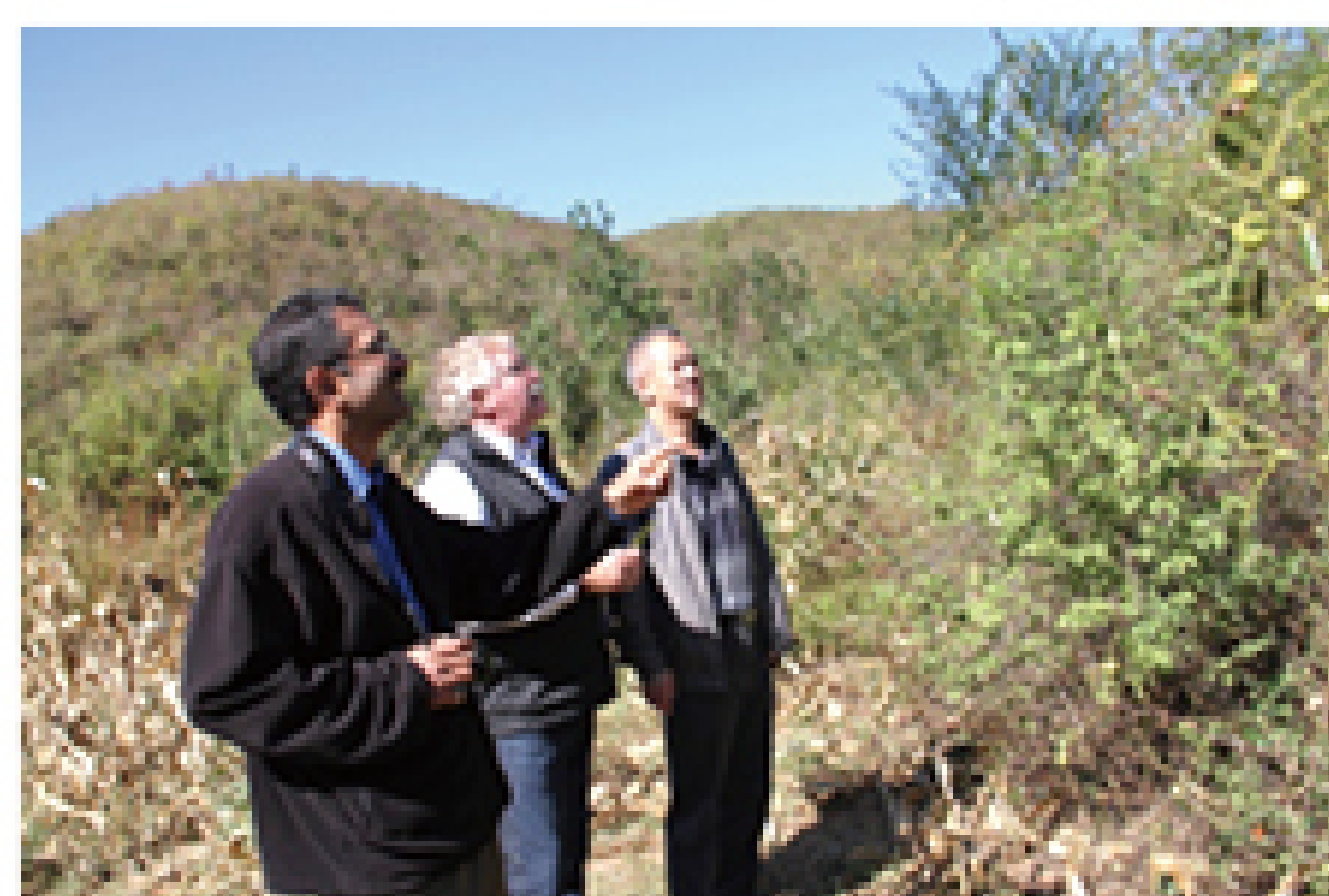


技术示范 Technical Demonstration

- ◆ 退化人工林多功能经营模式 Management of degraded planted forest
- ◆ 林业社区居民生计改善和生态果园建设模式 Livelihood improvement and eco-orchards
- ◆ 森林文化和生态旅游发展模式 Development of eco-tourism



能力建设及意识提高活动 Capacity Building and Awareness Raising



林业社区生计改善 Livelihood Improvement



项目推广 Project Dissemination



项目产出

Project Outputs



项目成果 Project Outputs	
<p>成果 Output 1</p>	<p>恢复及经营密云水库流域三个试点项目区 280 公顷的森林，总结出退化水源林综合经营、林业社区居民生计改善模式、森林文化和生态旅游发展模式并在全市进行推广。</p> <p>Monoculture plantations of <i>Pinus Tabuliformis</i> and <i>Platycladus Orientalis</i> of 280 hectares in three project sites are managed in a close-to-nature approach.</p>
<p>成果 Output 2</p>	<p>通过可持社区发展措施，当地林业社区的生计有所提高。</p> <p>The livelihood of local communities improved by promoting eco-tourism.</p>
<p>成果 Output 3</p>	<p>当地社区及林业工作者森林经营的能力得以提高，当地社区森林资源保护的意识得到提高。</p> <p>Capacity of local communities in managing forest and eco-tourism improved.</p>
<p>成果 Output 4</p>	<p>项目成果在典型饮用水源保护地进行推广，政策建议提交至相关政府部门。</p> <p>Experience and lessons learned summarized and disseminated.</p>

