



*Asia-Pacific Network for Sustainable Forest Management
and Rehabilitation*

COMPLETION REPORT

*Community Based Sustainable Forest Management of
Sungai Medihit Watershed, Sarawak, Malaysia,
(APFNet/2013/PP/05)*

1 July 2015 to 31 May 2018

Supervisory Agency:
INTERNATIONAL TROPICAL TIMBER ORGANIZATION
Executing Agency:
FOREST DEPARTMENTSARAWAK



BASIC INFORMATION

| | | | |
|---|--|--|---------|
| Project Title (ID) | <i>Community Based Sustainable Forest Management of Sungai Medihit Watershed, Sarawak, Malaysia, (APFNet/2013/PP/05)</i> | | |
| Supervisory Agency | International Tropical Timber Organization | | |
| Executing Agency | Forest Department Sarawak | | |
| Implementing Agency | None | | |
| Date of Project Agreement: 23/03/2015 | | | |
| Duration of implementation: 1 July 2015 to 31 May 2018 (24 months plus 6 month extension) | | | |
| Total project budget(in USD) | 460,000 | APFNet assured Grant (in USD) | 460,000 |
| Actual project cost (in USD) Including counterpart in kind contribution | 593,000 | APFNet disbursed Grant (in USD) including supervisory costs of USD55,200 | 414,000 |
| Disbursement Status | Date of disbursement | Amount(in USD) | |
| Initial disbursement | 16/07/2015 | 130,000 | |
| Additional disbursement | 27/04/2016 & 16/05/2016(including supervisory costs USD27,600) | 204,000 | |
| | 18/12/2017 (including supervisory costs USD27,600) | 80,000 | |
| Balance to be disbursed | | 46,000 | |
| Reporting Status | Schedule implementation | Project progress status | |
| First reporting (period covered: 01/07/2015-30/06/2016) | Behind schedule | Moderately satisfactory | |
| Second reporting (period covered: 01/07/2016-30/06/2018) | On schedule (progress report) | Moderately satisfactory | |
| Final reporting (period covered: 01/05/2015-31/05/2018) | On schedule | Satisfactory | |

Executive Summary

The Sungai Medihit Watershed (approx. 35,400 ha) is located in Ulu Limbang in northern Sarawak, Malaysia. Two local indigenous communities, the Kelabit of Long Napir and the Penan of Kampung Bahagia, occupy the catchment. Both communities are subsistence farmers, practice shifting cultivation and depend on resources collected / hunted from the nearby forest. The two communities face many problems in the catchment, the forest has been logged and its resources are neither sustainably managed nor used to their best advantage.

In 2008, a six month ITTO Pre-Project started in the catchment, which was the basis for the design and development of this two-year Project. In July 2015, the APFNet funded Project Community Based Sustainable Forest Management of Sungai Medihit Watershed lunched, which aims to promote the sustainable forest management in Sungai Medihit watershed area by building the capacity of the community and demonstrating innovative forest management methods. Till May 2018, all the scheduled activities have been completed by Executing agency.

The key outputs of this project includes:

- Improvement in community forest management
 - Baseline survey on forest resources assessment and socio-economic development of completed to indicate the current situation of the communities' socio-economic status and the catchment's forest resources.
 - Framework of community forest resources management plan for target communities developed.
 - SFM Demonstration Site for the target communities established, the field activities conducted including traditional forest management model combined with advanced silviculture activities, agroforestry system, high ecologic value forest identification and protection, high commercial value tree species planting, collection and processing of NTFPs, training on silviculture treatment as planting, grafting, tendering and low-impact logging.

- Enhancement of the capacity of the communities
 - Both target communities were exposed to four new methods of increasing household incomes through the introduction of Alternative Livelihood activities. Capacity for has been built in the communities for fish and chicken rearing, vegetable growing and homestay development.
 - Service infrastructure has been renewed with the access road to Long Napir gravelled, and construction of the 1.5 km village road link to replace the motorcycle track from Long Napir to Kampung Bahagia successfully completed.

The impact has been to stimulate their economy including further vegetable farming and a made-to-order handicraft industry. Their handicrafts are now marketed in Brunei, Kuala Lumpur, Penang and even in USA, with the help of an NGO 'Help the Penan'. Other service infrastructure included renovation of a Guesthouse at the residential school that facilitates Penan parents settling their children in at school. The communities now have developed new attitudes. The Penan ladies have become entrepreneurial. The Kelabit community, once reluctant to show the consultants their patch of reserved forest at Long San, are now supportive of its being a SFM Demonstration Site.

CONTENTS

| | | |
|------|--|----|
| 1. | BACKGROUND AND INTRODUCTION..... | 9 |
| 1.1. | Project context | 9 |
| 1.2. | Project goals and objectives..... | 11 |
| 1.3. | Project expected outputs and outcomes | 11 |
| 2. | PROJECT IMPLEMENTATION | 12 |
| 2.1. | Project schedule and implementation arrangements..... | 12 |
| 2.2. | Project resources and costs..... | 30 |
| 2.3. | Procurement and consultant recruitment | 32 |
| 2.4. | Monitoring & evaluation and reporting | 33 |
| 2.5. | Dissemination and knowledge sharing | 34 |
| 3. | PROJECT PARTNERS' PERFORMANCE | 35 |
| 3.1. | Performance of Supervisory Agency (ITTO) | 35 |
| 3.2. | Performance of Executing Agency..... | 36 |
| 3.3. | Performance of consultants (technical assistants), contractors and suppliers | 37 |
| 3.4. | Performance of APFNet..... | 37 |
| 4. | PROJECT PERFORMANCE..... | 40 |
| 4.1. | Project Impacts | 40 |
| 4.2. | Sustainability | 43 |
| 5. | CONCLUSION, LESSONS LEARNED AND RECOMMENDATIONS | 44 |
| 5.1. | Conclusion | 44 |
| 5.2. | Lessons learned and recommendations..... | 45 |
| | Annexes | 47 |
| | Annex A Implementation status (scheduled versus actual) | 48 |
| | Annex B(1) Details of project cost by category (Total USD 460,000); | 52 |
| | Annex C Project audit report..... | 54 |
| | Annex D Project outputs | 55 |

1. BACKGROUND AND INTRODUCTION

1.1. Project context

The Sungai Medihit Watershed (approx. 35,400 ha) is located in Ulu Limbang in northern Sarawak, MALAYSIA. Sungai Medihit (approx. 48 km) flows north-northwest from its source to its confluence with Sungai Limbang at Long Napir in the north as indicated in Figure 1 of the Project Site Map.

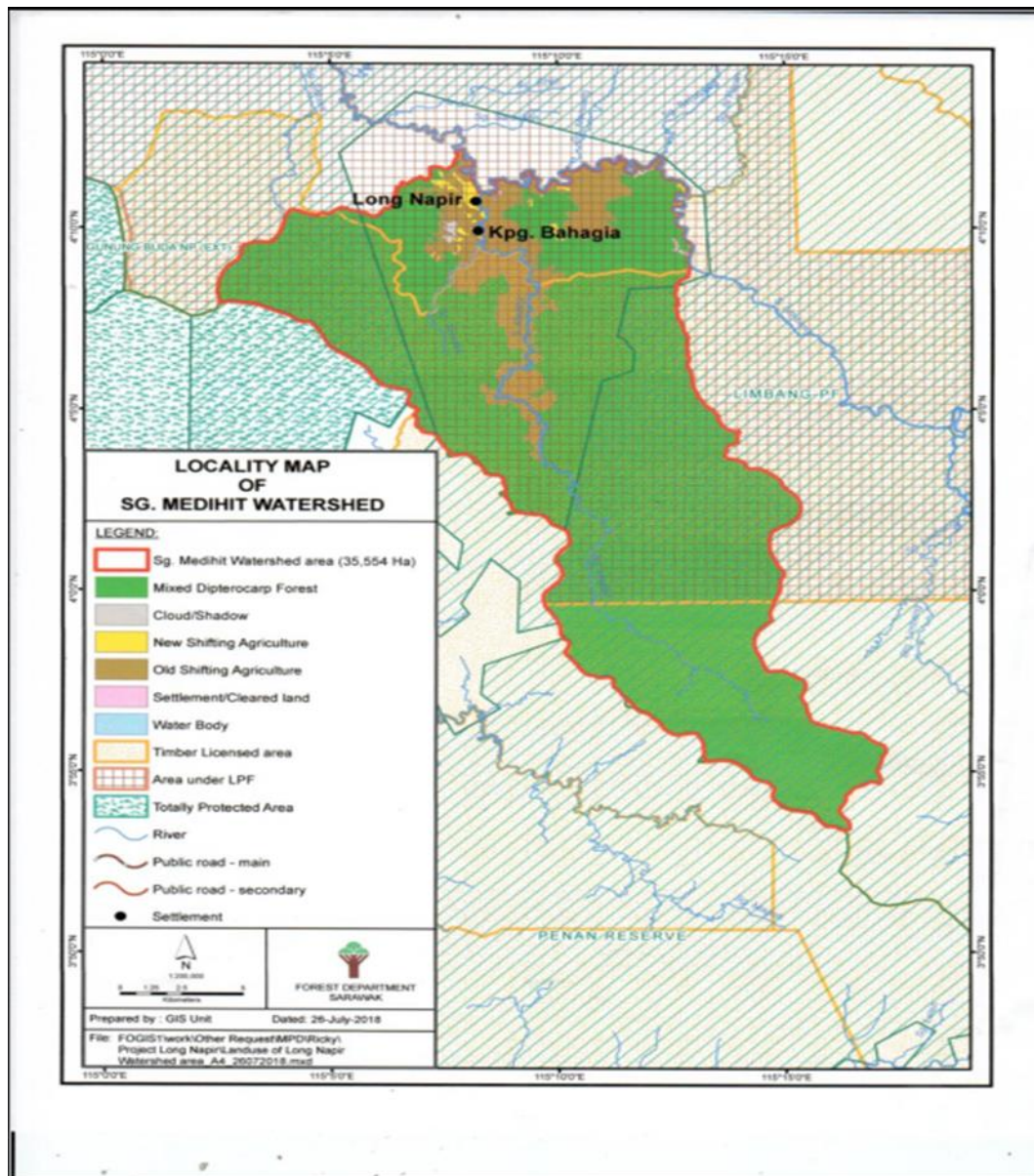


Figure 1: Project location and site map

Two local indigenous communities, the Kelabit of Long Napir and the Penan of Kampung Bahagia, occupy the catchment. The Kelabits first settled the Sungai Medihit catchment, where they practised shifting agriculture for more than 100 years, clearing and burning

forests. The two communities have lived side by side and supported one another for many years. Both communities are subsistence farmers and practice shifting cultivation as most of the area is hilly and mountainous and large scale wet paddy cultivation is not possible due to limited flatlands. In addition, they depend on resources collected / hunted from the nearby forest. This forest is continually affected by logging operations. The low paddy yields and depletion of forest resources trap both communities in relative poverty at barely subsistence level.

Nowadays these two communities face many problems. The Key Problem is that the catchment and its resources are neither sustainably managed nor used to their best advantage. Stakeholders are not equipped with information on catchment resources and how they might profit from them, or with guidelines to help them manage the catchment sustainably. They lack skills to sustain catchment resources for profit (local communities through Community Development Projects (CDPs) and license holders through resource restoration or achievement of goals towards Forest Management Certification [FMC]). Finally, stakeholders fail to share what information they have to synergize on how best to handle the catchment and its resources.

The effects of the problem are that local communities are unable to implement cash-generating projects, the catchment's timber resource base is eroded while innovative ways to restore it are not developed, tested or implemented and the catchment environment is damaged. Society is affected in that the local communities remain poor without a secure livelihood while the resource base and environment continue to be degraded. Also, the catchment's ability to provide environmental services for society at large is compromised.

The beneficiaries' needs are a direct consequence of the Key Problem: the catchment and its resources are neither sustainably managed nor used to their best advantage in that although resources are present in the catchment, stakeholders are not aware of some and not able to care for and profit from others (e.g. temuda land, plant and riverine resources) due to lack of information, guidelines and skills.

The project strategy involves addressing the key problem through the collection, dissemination and explanation of information to enable local communities to know where, and with what resources, they can operate cash-generating CDPs, obviating their need to deplete local resources through a subsistence existence; through formulation of guidelines to permit local communities and license holders alike to sustainably manage the catchment; through the development of skills in local

communities and license holders so that they can each sustain and restore catchment resources for profit and the catchment's well-being; and through development of a tradition, process and forum for stakeholders to synergize on catchment management and use.

The project design involves the direct participation of the two local communities, maximizing local participation and involvement to help the local communities achieve sustainable livelihoods and improve sustainability of forest management. This can benefit the communities financially and enhance economic returns to the village. The local people can provide manpower and skilled workers. The social fabric of both communities, based on community spirit, shouldering burdens and workload together and sharing benefits, will be further strengthened. The project design is based on the actual needs of the local communities for forest management and development.

1.2. Project goals and objectives

Project Goal: *to promote sustainable forest management (SFM) in Sungai Medihit Watershed through community capacity building, innovative operational model demonstration and establishing a new governance mechanism on community development.*

Project Specific Objectives: *to improve SFM through rational forest management plans applying innovative forest management techniques and establishing effective forest management mechanisms; to enhance the communities' capacity for SFM and livelihood development and to improve the community living conditions by renovating the service infrastructure.*

1.3. Project expected outputs and outcomes

Output 1 Community forest management improved

- Baseline surveys of community socio-economic status, forest resources, biodiversity and traditional cultures completed;
- Two community level forest management plans developed;
- Demonstration activities on Sustainable Forest Management carried out; and
- A community-based forest management platform and mechanism developed.

Output 2: Capacity of the community on development enhanced

- Alternative livelihood projects for each community trialled and village level infrastructure constructed. The alternative livelihood projects include Fish Raising Demonstration and Poultry Raising Demonstration to address the hunting threat to wildlife; Vegetable Cropping to tackle the short supply of vegetables, and Develop Homestay for Eco-Tourism as an innovative approach to generate economic benefits for the communities.
- The village level infrastructure is: Gravel 7 km of Road from Camp Kilo 0 to Long Napir, construction of 1.5 km of road to old Long Napir, renew a school Guesthouse and Alternative Energy Facilities.

2. PROJECT IMPLEMENTATION

2.1. Project schedule and implementation arrangements

The Schedule of Project Activities (Table 4) is based chiefly on AWP1 and also AWP2. Activities for Output 1 were delayed to some degree due to various factors (Table 4). Activities 2.1 and 2.2 were implemented according to schedule.

Table 3: How well schedule was implemented

| Activity | Implementation |
|----------------------------|---|
| Activity 1.1 | |
| Socio-economic study | Completed behind schedule due to change of consultant |
| Forest Resource Assessment | Second field study completed behind schedule as consultant not available earlier |
| Activity 1.2 | Completed behind schedule due to inadequate action by, and then termination of consultant |
| Activity 1.3 | Some sub-activities completed on time, others completed behind schedule due to land issues and lack of consensus on where to locate demonstration sites |
| Activity 1.4 | On schedule - Co-Management Agreement drafted |
| Activity 2.1 | Implemented according to schedule |
| Activity 2.2 | Implemented according to schedule |
| Additional Activity | Project video- completed |

| | |
|--|----------------------|
| | Brochure - completed |
|--|----------------------|

No major changes to the Project occurred that involved approved project revisions that changed or impacted project scope.

However, the following changes were made:

Mr Morris Kapong Senap resigned as APFNet Project Manager in December 2016 due to poor health and Mr Derek Paran was appointed as the interim project manager. Mr Derek Paran was specifically tasked to prepare the 1st Project Progress Report and the Annual Work Plan Year 2. He resigned in June 2017. Mr Suliman Jamahari was appointed as the new Project Manager in July 2017.

Results: This caused some disruption to the Project's smooth running as three Project Managers have been appointed over the project period.

The Project Steering Committee cancelled *Activity 2.2.2 Build Multi-functional Meeting Hall for the Community* at the 2nd PSC meeting on 11 July 2017 due to community disagreements over the location of the Hall.

Results: The budget intended for this activity was partially used for Activity 2.2.1.

The Project was extended for 6 months, till 31 May 2018, as Activities still needed to be completed.

Results: All the Activities were completed within the extended Project duration, including an additional Activity: *Project dissemination. Activity 1.4.1 Sign Co-management Agreement* awaits input from Sarawak State Attorney General.

Project outputs and activities are described as follows.

Output 1: Improvement in community forest management

Activity 1.1 *Baseline Survey on Resources and Socio-economic Development*

Forest resources survey report and the socio-economic survey reports were developed. A forest resource survey of 11 strips was successfully carried out in the catchment by EA forestry officers and staff, and gave an indication of the poor timber stocks in the

area. The data led to a better basis for the choice of High Value timber species to be introduced and demonstrated to increase the local farmers' income from Forest Plantations (Activity 1.3.4).



Figure 2-3: Forest resource assessment

The results of the socio-economic survey provided a baseline against which Project achievements (e.g. target communities' increased income) could be measured.

Activity 1.2 Community Forest Management Planning

The Community Forest Resource Management Master Plans were developed for both communities. A combined Village Meeting, with 70% attendance, was successfully conducted, leading to increased awareness of the importance of Sustainable Forest Management (SFM) among the target communities. Efforts were made to conduct a timber resource survey with the help of the local community. Participatory natural resources mapping conducted during the ITTO Pre-project was continued. Priorities and strategies for the development of forest resources (Activity 1.2.3) were identified and are included in the two Community Forest Resource Management Plans (Activity 1.2.4) that were developed, one for each target community.

The Community Forest Resource Management Master Plans mainly include:

- Community current situation assessment, opportunity and challenge analysis
- Forest resources assessment, summary of the most important resources used by the Kelabit and Penan communities
- Priorities and strategies for development of forest resources
- Management objectives, rationale and activities

- Co-management Committees/ Agreements with communities, budget plans

Activity 1.3 Demonstrate Sustainable Community Forest Management Practices

Traditional models for the protection and sustainable use of forest resources were recorded through interviews and field visits with members of both target communities (Activity 1.3.1).

| Name | Long San SFMDS | Ulu Sg Terasak SFMDS |
|------------------|---|---|
| Approx. location | N 4°9'59.5" E 115°6'16.2" | N 4°7'31.0" E 115°6'57.3" |
| Elevation (m) | 440-490 | 440-570 |
| Size (ha) | 753 | 678 |
| Land status | State land | Within LPF 0038 issued to Limba Jaya Company (contractor: Lee Ling Timber) |
| Access | By longboat from Long Napir | Logging road to Long Seridan beyond Jambatan Terasak |
| Description | <ul style="list-style-type: none"> • Central part never logged, though margins may have been • Community disallows hunting • Community has prevented road construction in the area | <ul style="list-style-type: none"> • Logged in the past • Large trees present |

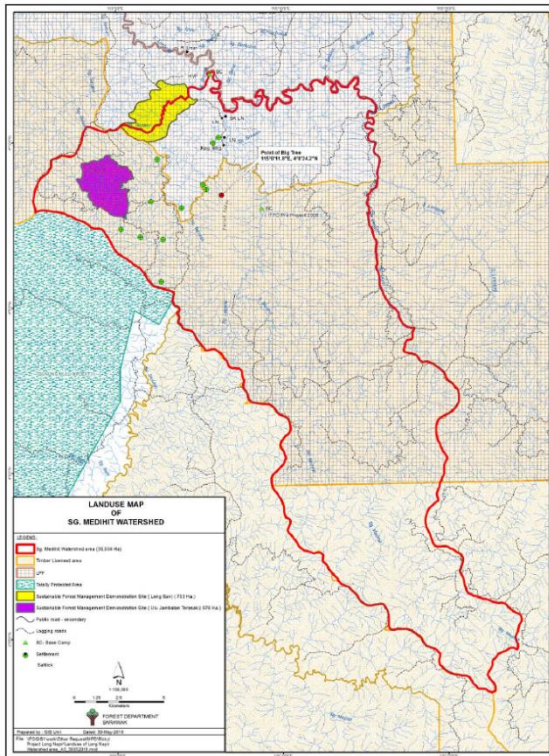


Figure 4: Location of Kelabit (yellow) and Penan (purple) SFM Demonstration Sites and other conservation areas

Establishment of SFM Demonstration Sites (Activity 1.3.2) for each target community

began towards the end of the Project after site visits to the proposed locations to evaluate their features and condition. The Demonstration Site for the Kelabit community, to be located at the High Conservation Value Forest identified for Activity 1.3.3 at Long San, lies partly outside the Sg Medihit catchment in an area License for Planted Forest. Further consultation is thus needed between Director of Forests, Forest Department Sarawak, and the license holder in order to protect the area. The Demonstration Site for both communities is currently located at ulu Sg Terasak and the Director of Forests has directed the timber companies not to do logging operation at the sites. Steps taken to protect the two areas were to designate them as SFM Demonstration Sites in the two Community Forest Management Plans.

Suitable High Value Tree Species that can increase the local farmers' income were identified during interviews with both target communities (Activity 1.3.4). They were chiefly fruit trees found wild in the forest, whose fruits can be harvested and sold in Limbang, Durians (*Durio* – Bombacaceae) being the most important species. The EA initiated steps to introduce and demonstrate these species to the target communities by (i) establishing nurseries near each respective village with the help of each target community, to the communities' build capacity and (ii) helped stock the nurseries and demonstration area at ulu Sg Terasak with 1000 seedlings including seedlings of fruit trees, gaharu (*Aquilaria beccariana* and *A. microcarpa* (Thymelaeaceae)) (140) and timber trees (200 belian or sagat (Kelabit) (*Eusideroxylon zwageri*) seedlings; selangan batu (*Shorea*) (200), kapur (*Dryobalanops*) (200) and engkabang (*Shorea macrophylla*) (200) planted at ulu Sg Terasak.

A complete list of tree and NTFP species with economic value to the Kelabit and Penan communities, and worth planting, was developed. This helped with Activity 1.3.5 Demonstrate the Sustainable Harvesting and mode of Processing NTFPs, as the most economically important species could be targeted for sustainable harvesting demonstrations. The prime rattan species used by the Penan community, *Calamus caesius*, was the subject of one such demonstration.

Activity 1.4 Establish the Participatory Community Forest Management Mechanism

A Co-management Agreement (Activity 1.4.1) has been developed and is at the Sarawak State Attorney General's office, for its legal implications to be checked before signing. The Co-management Agreement will be translated into Bahasa Malaysia for inclusion in the Community Forest Management Plan. Co-management Meetings are being held.

Output 2: Capacity of the community on development enhanced

The achievement of this Output was highly satisfactory.

Activity 2.1 *Alternative Livelihood Activities* comprised four sub-Activities, all of which were completed more or less successfully.

Activity 2.1.1 Fish Raising Demonstration

Establishment of a 'ngifang' or 'tagang' system, where fish are protected in areas in their natural riverine habitat, faced initial problems due to river pollution arising from road construction and destruction of fish feeding sites. Later in the Project, after the pollution problems had resolved, a new tagang system site was identified with the assistance of Agriculture Department Sarawak.



Figure 5-6: The Site to demonstrate the “Tagang” fish raising system

Activity 2.1.2 Livestock or Poultry Raising Demonstration

Five batches of chickens were successfully reared, each over three months. The Kelabit community had the greater success, with Puan Nakap making an average of more than USD 500 [RM 2000] per batch. At sale, each chicken weighed an average of 4.8 kg and was sold at the local price of RM12.50 per kg. Chicken rearing is sustainable only if a supply of chicks can be easily obtained. SKR Long Napir, which is a boarding school, is potentially a good market for halal chickens.



Figure 7-8: Chicken Farming at Project site

Activity 2.1.3 Vegetable Cropping

The vegetable Project started rather late. The Penan community vegetable cropping area was abandoned for a while as Sarawak Energy Berhad took over the land for a Solar Project. The Penan vegetables are growing well and one Penan vegetable farmer goes as far as a three hour motorbike ride to deliver the vegetables to customers at logging camps. Now the Penan farmers are growing vegetables to meet customer bookings.



Figure 9-10: Vegetable cropping

Activity 2.1.4 Develop Home-stay for Eco-tourism

The Project upgraded Mr Ajang Gabar’s house at Long Napir as a homestay. Two rooms were renovated and can accommodate more than 10 people. The Project also upgraded facilities at Puan Nomi’s house at Kampung Bahagia to make a homestay that can accommodate two persons at a time. The households involved have learned new skills and both homestay hosts have hosted people.



Figure 11-12: The renewed house to make homestay at Kampung Bahagia

Activity 2.2 Infrastructure Improvement Contributing to SFM also comprised four sub-Activities, three of which were completed more or less successfully, while one was cancelled.

Activity 2.2.1 Gravel 7 km of Road from Camp Kilo 0 to LN including construction of more than 1KM of road to old LN

The access road from Km 0 to Long Napir was very dangerous, muddy and slippery during wet periods. More gravel has been applied at the muddy areas to improve roadside drainage. Project partner, Jukut quarry, donated the stone and the Project paid for its (rather costly) transport. The gravelling was particularly necessary as road use is heavier now that a clinic is being constructed at Long Napir.



Figure 13: Road to Kpg Bahagia constructed under APFNet project

Long Napir is now linked to Kampung Bahagia. Construction of the 1.5 km village road link to replace the motorcycle track from Long Napir to Kampung Bahagia was successfully completed on time, with the help of Lee Ling Timber Company under their Corporate Social Responsibility initiative. The road includes two steel bridges, each with

a span of more than 10 m and load tolerance of more than 30 tonnes, crossing Sg Kibut at Long Napir and Sg Napir at Kpg Bahagia. The estimated cost to Lee Ling Timber was RM 1.9 million for road construction, RM 200,000 to gravel the road and RM 400,000 for each bridge. The overall estimated cost of the road, including input by the State Government, was more than USD 500,000. Local communities surveyed the road alignment from Long Napir to Kpg Bahagia; discussions were held with Native Customary Rights (NCR) land owners and compensation awarded early in the Project for fruit trees that had to be cut down. The Penan community finds the road invaluable to reach the Penan Guesthouse at SRK Long Napir and to transport their handicrafts to Limbang. Two community members have purchased 4WD twin cab vehicles for this purpose. Their handicrafts are now marketed in Brunei, Kuala Lumpur, Penang and even in USA, with the help of an NGO 'Help the Penan'.

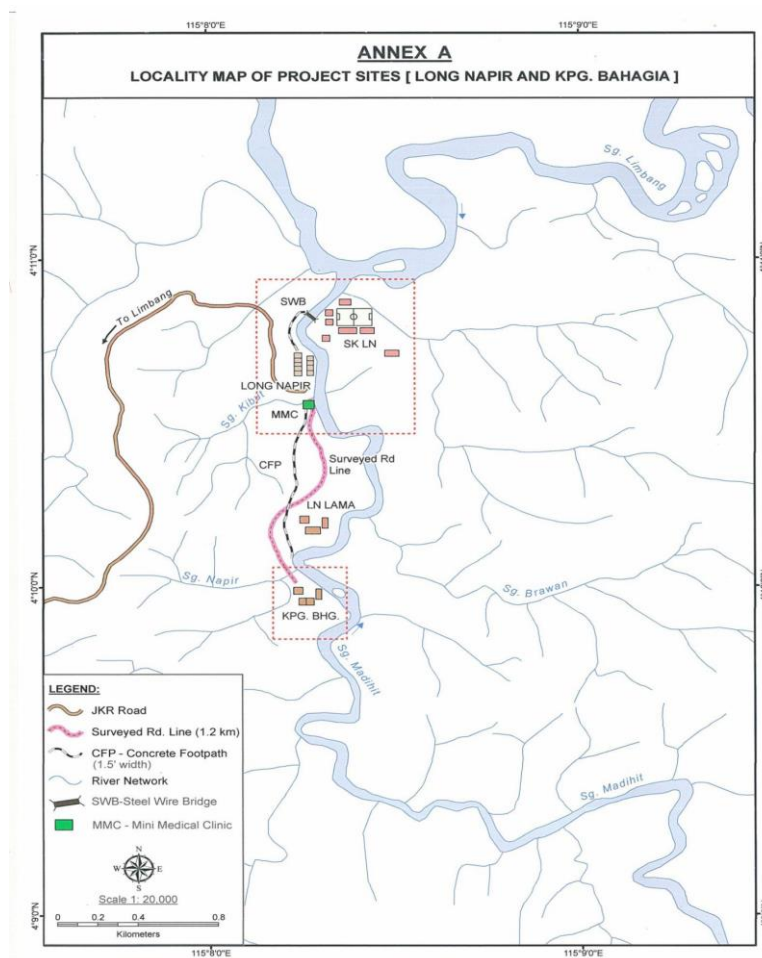


Figure 14: Road alignment between Long Napir and Kampong Bahagia

Activity 2.2.2 Build Multi-functional Meeting Hall for the community

This Activity was cancelled as the Long Napir community could not agree on a site for the Hall.

Activity 2.2.3 Build Guesthouse for the community school

Renovation of the Guesthouse at SKR Long Napir, built for Penan parents to use while settling their children in at school, has been completed, even though this Activity faced delays due to objection from the school management.

Activity 2.2.4 Alternative energy facilities demonstration

Installation of solar energy power systems at selected households at both villages is complete. However, it has been superseded by a solar power system provided by the government in February 2017.



Figure 15: Solar system developed at Kampong Bahagia

Additional Activity

The Activity *Project dissemination*, added late in the Project, includes a video of the Project showing its successes, shot in March 2018, in part using a drone (Table 9).

The above details indicate that the Project Goal to promote sustainable forest management (SFM) in Sungai Medihit Watershed through community capacity building, innovative operational model demonstration and establishing a new governance mechanism on community development is well on its way to being achieved.

The Project Specific Objectives:

- *to improve SFM through rational forest management plans applying innovative forest management techniques and establishing effective forest management mechanisms;*

- *to enhance the communities' capacity for SFM and livelihood development, and*
- *to improve the community living conditions by renovating the service infrastructure*

have all been achieved, and the building of the road link between Long Napir and Kpg Bahagia has been a particularly successful move.

Problems encountered in identifying the demonstration sites for both communities were solved during these meetings. An area where Forest Resource Assessment had already been completed was to be set aside as a Demonstration Site.

Table 4: Schedule of project activities

| Planned activities | Project Year 1 | | | | Project Year 2 | | | | Project Extension | Changes | Results |
|---|----------------------|----------------------|-----------------------|-----|----------------|-----|-----|-----|-------------------|---|---|
| | 1/7/2015 - 30/6/2016 | 1/7/2016 - 30/6/2017 | 1/11/2017 - 30/5/2018 | | | | | | | | |
| | Q 1 | Q 2 | Q 3 | Q 4 | Q 1 | Q 2 | Q 3 | Q 4 | | | |
| Activity 1.1 Baseline Survey on Resources and Socio-economic Development | | | * | | | | | | | * Mr Philip Lepun terminated Jan. 2016; replaced by Mr Jiram Sidu | |
| Activity 1.1.1 Review Documents and Information Collected | | | | | | | | | | | |
| Activity 1.1.2 Field Investigation | | | | | | | | | | | |
| Activity 1.1.3 Report Writing | | | | | | | * | ** | | | * A socio - economic study of the communities living within Sg. Medihit watershed, Limbang. Jiram Sidu. Feb. 2017 **Report on forest resource assessment at APFNet Project Area, Nanga Medihit, Limbang. Ricky Jonathan Alek, May 2018 |
| Activity 1.2 Community Forest Management Planning | | | * | | | | | ** | | * Dr Petrus Bulan terminated Jan 2016; replaced by Mr Suliman Hj Jamahari, EA Counterpart | ** Most of Activity 1.2 only done in 2018 |
| Activity 1.2.1 Convene Village Meetings | | | | | | | | | | | |

| Planned activities | Project Year 1 | | | | Project Year 2 | | | | Project Extension | Changes | Results |
|---|----------------------|-----|-----|-----|----------------------|-----|-----|-----|---|---|---------|
| | 1/7/2015 - 30/6/2016 | | | | 1/7/2016 - 30/6/2017 | | | | 1/11/2017 - 30/5/2018 | | |
| | Q 1 | Q 2 | Q 3 | Q 4 | Q 1 | Q 2 | Q 3 | Q 4 | | | |
| Activity 1.2.2 Conduct Participatory Natural Resource Mapping | | | | | | | | | | | |
| Activity 1.2.3 Identify Priorities and Strategies for Development of Forest Resource | | | | | | | | | Dr Katharine Pearce assisted to complete these Activities in 2018 | | |
| Activity 1.2.4 Develop Community Forest Resource Management Plans | | | | | | | | | * | * Community Forest Management Plans completed June 2018 | |
| Activity 1.3 Demonstrate Sustainable Community Forest Management Practices | | | | | | | | | * | * Final Report Activity 1.3 Demonstrate sustainable community forest management practices, Dr Katharine Pearce, June 2018 | |
| Activity 1.3.1 Summarize Traditional Models for Protection and Sustainable Use of Forest Resources Within Communities through Interviews and Field Survey | | | | | | | | | | Completed on schedule | |

| Planned activities | Project Year 1 | | | | Project Year 2 | | | | Project Extension | Changes | Results |
|---|----------------------|-----|-----|-----|----------------------|-----|-----|-----|-----------------------|----------------|---------|
| | 1/7/2015 - 30/6/2016 | | | | 1/7/2016 - 30/6/2017 | | | | 1/11/2017 - 30/5/2018 | | |
| | Q 1 | Q 2 | Q 3 | Q 4 | Q 1 | Q 2 | Q 3 | Q 4 | | | |
| Activity 1.3.2 Establish Sustainable Forest Management Demonstration Sites | | | | | | | | | | Completed 2018 | |
| Activity 1.3.3 Identify and Protect High Conservation Value Forest with the Guidance and Support of Experts | | | | | | | | | | Completed 2018 | |
| Activity 1.3.4 Introduce and Demonstrate Suitable High Value Tree Species to increase the local Farmers' income from Forest Plantations | | | | | | | | | | Completed 2018 | |
| Activity 1.3.5 Demonstrate the Sustainable Harvesting and mode of Processing NTFP's | | | | | | | | | | Completed 2018 | |
| Activity 1.3.6 Report writing | | | | | | | | | | Completed 2018 | |
| Activity 1.4 Establish the Participatory Community Forest Management Mechanism | | | | | | | | | | | |

| Planned activities | Project Year 1 | | | | Project Year 2 | | | | Project Extension | Changes | Results |
|---|----------------------|-----|-----|-----|----------------------|-----|-----|-----|-----------------------|--|---------|
| | 1/7/2015 - 30/6/2016 | | | | 1/7/2016 - 30/6/2017 | | | | 1/11/2017 - 30/5/2018 | | |
| | Q 1 | Q 2 | Q 3 | Q 4 | Q 1 | Q 2 | Q 3 | Q 4 | | | |
| Activity 1.4.1 Sign Co - management Agreement and hold Co-management Meetings | | | | | | | | | | Co-management Agreement was drafted but was not yet signed as this required legal scrutiny by the State Attorney Chambers | |
| Activity 1.4.2 Conduct Co-management Activities | | | | | | | | | | | |
| Activity 1.4.3 Report Writing | | | | | | | | | * | *Project Completion Report, Activity 1.4 Establish participatory community forest management mechanism. Mr Morris Kapong Senap, March 2018 | |

| Planned activities | Project Year 1 | | | | Project Year 2 | | | | Project Extension | Changes | Results |
|---|----------------------|-----|-----|-----|----------------------|-----|-----|-----|-----------------------|---|---------|
| | 1/7/2015 - 30/6/2016 | | | | 1/7/2016 - 30/6/2017 | | | | 1/11/2017 - 30/5/2018 | | |
| | Q 1 | Q 2 | Q 3 | Q 4 | Q 1 | Q 2 | Q 3 | Q 4 | | | |
| Activity 2.1 Alternative Livelihood Activities | | | | | | | | | | Completed on schedule Project Completion Report, Activities 2.1 & 2.2 Alternative Livelihood Activities & Infrastructure and Facilities Development, Derek Paran, 15/8/2017 | |
| Activity 2.1.1 Fish Raising Demonstration | | | | | | | | | | | |
| Activity 2.1.2 Livestock or Poultry Raising Demonstration | | | | | | | | | | | |
| Activity 2.1.3 Vegetable Cropping | | | | | | | | | | | |
| Activity 2.1.4 Develop Home-stay for Eco-tourism | | | | | | | | | | | |

| Planned activities | Project Year 1 | | | | Project Year 2 | | | | Project Extension | Changes | Results |
|--|----------------------|-----|-----|-----|----------------------|-----|-----|-----|-----------------------|--|---------|
| | 1/7/2015 - 30/6/2016 | | | | 1/7/2016 - 30/6/2017 | | | | 1/11/2017 - 30/5/2018 | | |
| | Q 1 | Q 2 | Q 3 | Q 4 | Q 1 | Q 2 | Q 3 | Q 4 | | | |
| Activity 2.2 Infrastructure Improvement Contributing to SFM | | | | | | | | | | Completed on schedule Project Completion Report, Activities 2.1 & 2.2 Alternative Livelihood Activities & Infrastructure and Facilities Development Derek Paran, 15/8/2017 | |
| Activity 2.2.1 Gravel 7km of Road from Camp Kilo 0 to LN including construction of more than 1KM of Road to old LN | | | | | | | | | | | |
| Activity 2.2.2 Build Multi-functional Meeting Hall for the Community | | | | | | | | | * | Activity cancelled by decision of 2 nd PSC on 11/7/2017 | |
| Activity 2.2.3 Build Guesthouse for the Community School | | | | | | | | | | | |
| Activity 2.2.4 Alternative Energy Facilities Demonstration | | | | | | | | | | | |
| Additional Activity Project Dissemination | | | | | | | | | | New activity | |

Potential risks that were identified in the Project Document, and counter-measures identified, are shown in Table 6.

Table 5: Potential risks and counter-measures identified in Project Document

| Assumptions / Risks | Outcome/ Response |
|---|---|
| Policy conflict with the relevant development and resource conservation policy at country, state or local levels. | None |
| Significant culture conflict risk | No culture conflict as new technique input and mechanism input respects the local peoples' traditional and culture through bottom up or community-based work mechanism |
| No significant project cost change | No significant project cost change and a cost control mechanism was established. |
| The risk of Project staff inconsistency | Project staff inconsistency became a reality during the project when two consultants were terminated and the Project Manager resigned. The smooth procedure of communications and work was impacted resulting in delays. |
| No significant risk of unequal benefit distribution occurred. | The project benefit was shared by the whole of both communities. Disadvantage groups had an opportunity to take part in, and benefit from the project. |
| Other projects implemented during the Project period. | None |
| Significant risk or negative impacts occurred due to the introduction of new techniques. | None |
| Exchange rate and budget-shortage risks in project implementation and budget management | Risk avoided through development of a budget monitoring and project running cost mechanism. Budget overrun for <i>Activity 2.2.1 Gravel 7 km of road from Camp Kilo 0 to Long Napir (LN) including construction of 1.5 km of road to old LN</i> . The EA managed to complete this activity. |

Unanticipated risks that impacted the smooth running of the Project included:

- Lack of a united front in the Kelabit community
- Community disagreements over land resulting in cancellation of Multi-Functional Community Meeting Hall and delay in deciding Demonstration Sites location.
- Objection from school management on renovation of Penan Guest House.

2.2. Project resources and costs

The Executing Agency put into operation all activities in accordance with the Project Agreement. The financial contribution from APFNet and the in-kind resources from the Executing Agency complemented each other.

The APFNet contribution is used for costs such as for project staff, consultant fees, travel and related costs, meeting and training, field activities cost, publication and dissemination, office and operation cost, procurement and supervisory monitoring and evaluation costs.

The in kind resources from the Executing Agency include project counterparts salaries, field staff travelling and lodging claims and other in kind contribution to the project.

The Project Manager responsibility include to ensure that all kinds of expenses including payment of all administrative and supporting staff be made in accordance with the Project Agreement and locally established procedures. The locally established procedures include the Treasury Instruction, Financial Circulars and Government Orders.

For the purpose of employment, a contract of engagement legally binding and the Terms of Reference for each consultant were duly agreed on and signed by both parties.

The Projects' financial and cash flow statements was prepared monthly for internal

monitoring and control by the Project Manager. This is to ensure that the project has been financially and efficiently managed.

The financial statements of the project are prepared under the historical costs convention and modified to include other bases of valuation as disclosed in other sections under significant accounting policies, and in compliance with Private Entity Reporting Standards in Malaysia.

Audited financial report was done in June 2016 by an independent external auditor, Idris Ibrahim Group., a chartered accountant. The external auditor audited all completed work and its expenses. The audit report was forwarded with auditor's comments, general information and financial statements to the supervisory agency which further forward to APFNet. In this way, there is a strong internal control of funds and irregular transactions and activities will not occur,

The Audit Financial Report based on its budget analysis till June 2016 noted that there is amount overspent on category personnel –local. The report clarified that the amount overspent was due to omission of budget for the Employee Provident Fund contribution. The fund is a statutory contribution imposed on any emolument paid to persons engaged in employment in Malaysia.

A cost variance analysis was also done and 10% or more by components against approved project budgets indicated that out of 9 components, only 1 component recorded a cost variance of 25%. The rest of the components recorded a very low costs variance such as office operation costs of 3% and field activities costs of 2%.

Activity 2.2.1 was partly funded by part of the budget intended for Activity 2.2.2

| | | |
|--|--------------------------------|---|
| edit other consultants' reports prior to publication & printing | | |
| Implement Activity 1.4 <i>Establish the participatory community forest management mechanism</i> | Mr Ricky Jonathan Alek | Mr Morris Kapong Senap wrote the Final Report |
| Implement Activities 2.1 & 2.2 <i>Alternative livelihood activities & Infrastructure improvement contributing to SFM</i> | Mr Derek Paran Morris | |
| Project monitoring and evaluation | PSC, ITTO & APFNet | |
| Legal aspects of <i>Co-Management Agreement</i> | Sarawak State Attorney General | |
| Financial auditing | Idris Ibrahim & Co. | |

2.4. Monitoring & evaluation and reporting

Table 9: Monitoring and evaluation

| Monitor/evaluator | Findings | Recommendations and suggestions | How actions were taken in response |
|---|---|---|---|
| EA (to arrange regular internal M&E) | Monitoring limited; evaluation lacking. The responsibility for internal M&E was not spelled out and scheduled. M&E listed under both Project Coordinator and Project Manager's responsibilities | Make monitoring schedule part of Annual Work Plan | New Project Director was active in monitoring progress and quality of Project outputs |
| APFNet (to conduct external Monitoring during or after project completion) | Led external M&E to ensure project implementation was on track in the direction of achieving Project objectives, especially at the Project's later stages | | |
| ITTO (to guide and support project planning & implementation and monitor according | Spearheaded M&E during last stage the Project (ITTO Project Evaluation Meeting, 27 March 2018, | | |

| | | | |
|-----------------------|-----------|--|--|
| to APFNet PIIM, 2013) | Kuching). | | |
|-----------------------|-----------|--|--|

Project progress updates and sharing of issues among project team and stakeholders, including APFNet, were formally conducted during the two PSC meetings.

2.5. Dissemination and knowledge sharing

Table 10 lists materials, activities and events organized on local and international occasions to share the project deliverables (all with a positive outcome).

Table 10: Dissemination materials and events where information was disseminated

| | |
|---|---|
| <i>Community-based sustainable forest management and rehabilitation of Sg Medihit watershed</i> | An account of the Project: for Tropical Forest Updates was prepared. |
| A briefing on the Project to Sarawak State Secretary | Kuching, 28 April 2016 |
| <i>Community-based sustainable forest management of Sungai Medihit watershed, Sarawak, Malaysia</i> | A paper delivered by the APFNet Project Manager at the Heart of Borneo (HoB) Seminar themed <i>Conserving Biodiversity through Sustaining Communities' Livelihood</i> , held in Kuching, Sarawak, 7-8 Dec. 2016. About 250 participants from various stakeholder groups, both government agencies and NGOs, were invited. |
| An introduction to the Project (power point presentation) | shared at the Asia-Pacific Forestry Planning Workshop <i>Moving Forward with Purpose: Realizing Strategic Forest Planning</i> held on 28 March, 2018 in Beijing, China |
| <i>Project changes lives of Long Napir residents</i> | Project information disseminated in Borneo Talk, Vol. 48 Apr-Jun 2018 pages 20-21. |
| A video and brochure of key on-the-ground Project activities | Produced after Project successes became apparent. |
| A poster presentation | Displayed at the Poster Session of the Malaysian Forestry Conference held on 31 st July - 2 nd Aug 2018 in Kuching, Sarawak. |

3. PROJECT PARTNERS' PERFORMANCE

3.1. Performance of Supervisory Agency (ITTO)

The Supervisory Agency (SA) was the International Tropical Timber Organisation (ITTO). Emmanuel Ze Meka, ITTO Executive Director, and Takeshi Goto, ITTO Assistant Director, Division of Forest Management, were signatories to the tripartite Project Agreement. Two different ITTO Project Managers headed the Project in succession; first Dr Ma Hwan Ok, followed by Dr Tetra Yanuariadi.

The Supervisory Agency, ITTO, expended its own funds amounting to USD73, 710 to implement Pre-Project PPD135/07 Rev.1(F): Community-Based Forest Management of Sungai Medihit Watershed over a period of six months, starting in December 2008. The Pre-Project was the basis for the design and development of APFNet Project [Serial No: APFNet/2013/PP/05]. The project expended USD 55, 200 to ITTO as supervisory cost in supervising the implementation of the project.

The SA's responsibilities were to liaise with the EA and APFNet and to guide and support Project planning and implementation in conformity with sound administrative and financial rules.

The SA took all necessary actions to:

- monitor Project implementation according to *APFNet PI/M (2013)* and *PPCSR2013* referring to ITTO project management rules and procedures,
- technically support the development and review of Project-related documents required by APFNet in a timely manner and in APFNet required formats,
- review Project-related documents and give feedback on their format and content to ensure submission of a complete set of documents in good order.

There were some Project Design issues that the SA maybe could have caught in the early stages of the Project.

3.2. Performance of Executing Agency

The Executing Agency (EA) is Forest Department Sarawak (FDS). The EA's main responsibilities and tasks, according to the Project Document, were to implement, manage and disseminate the project. In carrying out these tasks, the EA nominated the Project Coordinator and other Management Team members, provided office facilities for the Project Management Team, established a Project Steering Committee and appointed the PSC chairperson. The EA submitted this Project Completion Report, financial statement and the list of the assets to APFNet and ITTO.

Adequate Project records and documentation were maintained, enabling information (documents, photos, video clips, and publications etc.) to be available to APFNet. The EA submitted the following documents to the SA for primary review:

- a) 1st& 2ndAnnual Work Plan (AWP1& AWP2)
- b) 1stProject Progress Report (PPR1) and Audit Report for Project Year I
- c) Project Completion Report (PCR), Final Audit Report (July 2015 - May 2018) and other supporting documents

Table 11: How and to what degree the EA fulfilled its responsibilities and tasks

| Task | How and to what degree fulfilled |
|---|---|
| Responsible for Project implementation and do its utmost to ensure that the Project be implemented as planned, within the agreed budget and APFNet grant in a manner consistent with <i>APFNet PIIM, 2013</i> and <i>APFNet Procedures for Project Consultant Selection and Recruitment (PPCSR 2013)</i> , and in such a way as to achieve the goals and objectives set out in the Project Document | <ul style="list-style-type: none"> • The EA took action to keep the Project going when APFNet Project Manager Mr Morris Kapong Senap resigned by designating Mr Suliman Hj Jamahari as Acting Project Manager at the 2nd PSC Meeting in July 2017 and appointing Mr Mohd Shahbudin Hj Sabki as Project Director in November 2017. • The EA took action to use unspent funds from a cancelled Activity(2.2.2) to pay for part of road construction costs (Long Napir to Kpg Bahagia link) |
| In consultation with APFNet, appoint a full time Project Coordinator (PC) to lead a Project Team to plan and implement the Project Activities and perform duties such as Project | The State Government of Sarawak appointed Tuan Hj Sapuan Ahmad, Director, FDS, Project Coordinator & Mr Mohd Shahbudin Hj Sabki, Assistant Director, FDS, as Assistant Project Coordinator at the start of the Project. |

| Task | How and to what degree fulfilled |
|--|--|
| coordination, internal coordination, monitoring and evaluation. | |
| Establish a Project Steering Committee (PSC) composed of representatives from the Supervisory Agency, Executing Agency and other key Project stakeholders, to serve as a decision-making body, supervise Project Implementation and make decisions on crucial issues; and convene Committee meetings | The EA established the PSC and convened the 1 st APFNet PSC Meeting on 16 May 2016 in Kuching and the 2 nd APFNet PSC Meeting on 11 July 2017 in Miri. |

3.3. Performance of consultants (technical assistants), contractors and suppliers

There was no Implementing Agency. Project partners included consultants, technical assistants, the timber license holder operating in the area and the Jukut Quarry which supplied gravel to lay on the muddy areas of the access road to Long Napir.

Consultants took responsibility for the various Project Activities (Table 7). Two consultants, Petrus Bulan and Philip Lepun, were terminated early in the project. Four other consultants fulfilled their responsibilities and tasks. Mr Ricky Jonathan took on the additional responsibility for part of Activity 1.1, as did Dr Katharine Pierce, helping to develop the Community Forest Management Plan and write the Completion Report towards the Project's end.

3.4. Performance of APFNet

Professor Qu Guilin, former Executive Director, Secretariat, Asia-Pacific Network for Sustainable Forest Management and Rehabilitation (APFNet) initially visited the Project site in March 2015 and he and Ms Sun Weina, Program Officer, Asia-Pacific Network for Sustainable Forest Management and Rehabilitation (APFNet) signed the Project Agreement.

APFNet's responsibilities were to ensure the timely provision of necessary feedback on deliverables and assist with validation and approval of Project-related documents.

APFNet provided:

- timely support and clear guidance for project planning, implementation and management
- effective communication with project EA and partners and proper facilitation in undertaking project activities and project dissemination
- external M&E during the project implementation and shared swift feedback
- timely disbursement of the 2nd project grant

The APFNet Project officer originally assigned to the Project, Ms Sun Weina, was replaced in 2016 by Zhangyang and then by Mr Li Zhaochen. Mr Li acknowledged during the 2nd PSC Meeting that whenever a change in Project officer happens, it takes time for the new Project officer to get familiar with the Project and its activities. This may be one reason for delays to this Project.

APFNet encouraged production of a brochure and audio-video materials highlighting the Project impacts that became apparent as the Project drew to a close.

The APFNet Project Manager, Mr Morris Kapong Senap, resigned due to health reasons partway through the Project. A hiatus in Project implementation ensued until the 2nd PSC Meeting (Table 3). When the new Project Director took over a six-month Project Extension was granted so that the Project could be completed.

There were some issues with Project Design that maybe APFNet could have caught in the early stages of the Project.

Issues with Project Management

- Choice of two consultants was poor as their expertise did not match the tasks asked of them. This led to their being terminated.
- Some consultants' fees were calculated not at a monthly rate but on field days completed. This did not take account of the many hours of follow-up work that had to be done and greatly reduced incentive. Fees paid out to consultants for

some Activities in no way reflected the amounts budgeted.

- Lack of Monitoring. *APFNet PIIM Manual* requirements for formulation of a plan for internal M&E for each Project year & M&E undertaken by the Project Team were not met. When consultants were terminated, Activity 1/1/2 was only completed 20 months into Project while no-one was given responsibility for Activity 1.2, most of which was only completed in 2018,
- Apparent lack of critical evaluation of consultants' work.

Project design issues

Project design can be further improved with some sound administrative and financial rules.

- The Project organizational structure within the EA:
 - Appointment of Project Leader- The project lacked a Project Leader as the *APFNet PIIM Manual* specified only a Project Manager (PM) (or Director). The role of the Project Leader will provide critical leadership to the daily operation of the project. This lack of leadership significantly affected the Project Team's motivation and Project performance. There was an almost complete lack of scheduled meetings of the Project Team and consultants, and a delay in appointing a new Project Director when the Project Manager resigned.
 - Appointment of Director of Forest as the Project Coordinator (PC)- The project has appointed the Director of Forest as the Project Coordinator (PC). Traditionally DF's role in projects is titular rather than executive but the Project Agreement assigned the PC responsibilities (to conduct Internal monitoring and evaluation, to check Project Activity implementation and management by Project personnel and measure the progress, performance, achievements and issues). Furthermore, the PC's responsibilities overlapped with those of the Project Manager.

- Appointment of Technical Advisor- The project did appointed a Technical Advisor and appeared not to have been budgeted for and thus mid-term review assigned to him during the 1st PSC did not proceed.
- Activities design
 - The Pre-Project had already already covered the *socio-economic survey* under Activity 1.1 as well as *Natural Resource Mapping* (Activity 1.2.2)
 - Report writing should be an integral part of each consultant's duties in carrying out his/her TOR and not scheduled as a separate sub-activity requiring separate editing.
 - The term Sustainable Forest Management (SFM) (Activity 1.3) was difficult to conceptualise in the context of community forest management as SFM is normally used for commercial logging activities.

- Risk analysis

The very real risk that the community would not accept the project was not foreseen but did in fact cause major problems. Delay at the start of the Project and also later in the Project, was due to certain individuals being against the project, which they assumed was trying to take the land, or disagreements on land ownership. Activities 1.3.2 *Establish Sustainable Forest Management Demonstration Sites* and 1.3.3 *Identify and Protect High Conservation Value Forest*, and parts of Activity 1.4 *Establish the Participatory Community Forest Management Mechanism* were particularly affected.

- Contingency funds were inadequate

4. PROJECT PERFORMANCE

4.1. Project Impacts

Social impacts

Both target communities were exposed to four new methods of increasing household incomes. Each selected household learned at first-hand new skills to increase their

livelihood. Each selected household's income was increased lessening their dependence on forest resources for their livelihood. Other households gained inspiration from seeing their neighbours succeed with the new methods.

The two households, one Kelabit and one Penan, who were involved in homestay development, have learnt a lot about how to host visitors, including what facilities need to be provided, and how to charge for the service. Both homestays have had visitors, providing some income for the households involved.

There has been a change in how the communities think and they have developed new attitudes. An example from the Kelabit community is a household, having faced challenges rearing chicken as fresh batches of chicks need to be brought in regularly, have started to rear ducks in order to obtain duck eggs, which they can salt and preserve. The ladies of the Penan community are also becoming entrepreneurial. Puan Julia now plants vegetables to fill orders from timber camps and Puan Nomi has a thriving handicraft business and more orders than she can meet, filling orders for handicrafts relayed from customers in Brunei, with the help of an NGO Helping Hands Penan. The communities, having thought Forest Department Sarawak was going to take their land, now look to FDS as their helper. The Kelabit community, once reluctant to show the consultants their patch of reserved forest at Long San, are now supportive of its being a Demonstration Site for Sustainable Forest Management.

There has also been a change in how the communities value the forest resources. They take pride in the big tree (diameter 3.14m) and having been exposed to the concept of raising useful tree species in a nursery, have started to think about ownership of the resources and how to conserve, utilise and enhance them.

The EA has also been encouraged to see how the Activities to raise the communities' standard of living, especially agriculture and fish rearing, have succeeded.

Economic impacts

The Penan community's village is now linked to Long Napir, and thence to Limbang, by the road built under the Project. Two Penan community members have each purchased

a 4WD vehicle. They have been seen filling these vehicles with forest products, namely petai, and sending it to Limbang. The Penan handicraft business, although not a project Activity under the APFNet Project Document, has taken off. The Project Manager took the initiative to initiate this project by making a small outlay of USD150-200 [RM 600 – 800]. Puan Nomi, Puan Liging, Puan Julia and other Penan ladies of Kampung Bahagia used this to buy raw materials at Limbang town to make handicrafts. Today, they produce handicraft items to specified designs ordered by customers in Brunei, Miri and Bintulu. Every Sunday the handicrafts are transported down to Limbang to be collected by agents from Brunei. Puan Nomie receives an income of USD 500-750 [RM 2000-3000] per month, paid directly into her account.

Environmental impacts

The joint Demonstration Site at ulu Sg Terasak is now understood by the communities to be their area, which they shall improve by enrichment planting, and maintain by control of harvesting of forest resources. The protection and enrichment of the Demonstration Site will improve the condition of the forest there. The Kelabit community look forward to having their own Demonstration Site at Long San, once discussions have been completed between Forest Department Sarawak and the licensee in whose licensed area Long San partly falls.

Another environmental impact is the improvement of the river condition, as now both communities understand that unless the river is maintained pollution and silt free, fish culture in tagang systems will not succeed.

Impacts to Forest Department Sarawak

The EA was, for the first time, a party to the development of Community Forest Management Plans (CFMP) to be implemented by each of the communities. The EA is keen to see how these plans work in practise, and possibly deploy CFMPs elsewhere in Sarawak.

4.2. Sustainability

After the project ends Project benefits likely to be sustained include:

- Homestay development. The EA will work with the Ministry of Tourism to register the two homestays with the Ministry, who can then help build capacity for the homestay program.
- The Resident's Office, Limbang, can help promote the tourism and homestay facilities, as was noted in the 2nd PSC meeting.
- The Agriculture Department, Sarawak, can help put in place tagang fish rearing systems in Sg Medihit now that the level of pollution from road construction has become less and assist with livestock rearing and agriculture.
- A tourist agent who used to bring tourists to the area lost interest, but may now be encouraged to bring tourists to the area once again as homestays are available and the communities are interested in hosting visitors.

The EA is interested to continue the project under a Phase 2, in view of the many successes of this project and the target communities' supportive attitude to the way it has been implemented (in spite of initial disagreements, now resolved). A Phase 2 would focus on continuing SFM approaches, such as enrichment planting in the Demonstration Sites, to benefit both communities and build their capacity in Community Forest Management. It would also encompass ecotourism development, as there are potential nearby trekking sites such as Payah Seepai, the location of the 3.14 m diameter yellow meranti tree, and more remote destinations, including peaks (Buduk Peliew and Buduk Mutak) and the Mutak waterfall which have an interesting stories associated with them. Sport fishing is also a possibility, Community members would need to be trained as guides, to take tourists trekking safely and provide interesting accounts.

The EA is also interested in submitting proposals to APFNet for funding for similar work in new areas.

5. CONCLUSION, LESSONS LEARNED AND RECOMMENDATIONS

5.1. Conclusion

The Project Activities have been completed, with the signing of the Co-Management Agreement in progress and some further work on the Demonstration Sites. Activities 2.1 & 2.2 are successfully completed. The Specific Objective to enhance the communities' capacity for SFM and livelihood development and to improve the community living conditions by renovating the service infrastructure has been highly successfully achieved while the Specific Objective to improve SFM through rational forest management plans applying innovative forest management techniques and establishing effective forest management mechanisms still needs some hands-on work by the community.

Some of the project activities were not according to the timetable in the work plan due to various factors. However, the Project overall has had good successes in advancing the communities' livelihood, not least due to infrastructure construction. If lessons learnt are taken into account, this Project could become a model for implementation in other communities.

In many ways the Project Manager caused the Project to succeed, maybe not through the expected channels, but through his insight as to what might make the greatest difference. For example, he prioritised construction of the road link between Long Napir and Kampong Bahagia and provided the seed fund for highly the successful Penan plastic basket weaving enterprise. The PM's close relationship with the community was both helpful and a hindrance. Helpful because he knew the individuals and power structure in Long Napir and had a great heart for both the Kelabit community of Long Napir, and the Penan community of Kampong Bahagia, and a hindrance or counterproductive because he lacked being seen to be impartial and objective, qualities needed to unite the Kelabit kampong factions.

The Penan were responsive and wanted to be part of project almost from the outset whereas the Kelabit community lost time in disagreements early on in the Project.

Interestingly the participating households of the two target communities succeeded to different degrees in the various Activities. The Kelabit households did well rearing Tilapia fish in tanks and rearing chickens while the Penan participating household had great success with vegetable cropping and continue with it to this day. The Penan ladies also succeeded phenomenally with their handicraft industry, which was not even an Activity under the Project, but helped by a seed grant to buy materials from Mr Morris Kapong Senap, APFNet Project Manager, assistance from Help the Penan, a NGO, and not least because of the ease of transportation provided by the new road link from Kpg Bahagia to Long Napir built under the Project. Altogether, in terms of livelihood improvement, the Penan community may have done better out of the Activities than the Kelabit community at this point.

5.2. Lessons learned and recommendations

Table 62: Project Issues, Lessons Learnt and Recommendations

| Issues | Lessons learnt | Recommendations |
|---|---|---|
| Leadership and guidance | The <i>APFNet PIIM, 2013</i> plan for organization must be followed | <ul style="list-style-type: none"> • If it is necessary to add a titular position for the Director of Forests, the accompanying job description should not involve executive responsibilities • A Project Director (or Leader) position must be there to provide leadership - a Project Manager does not have leadership responsibilities |
| Problems with financial aspects | The Project line-up should include a Finance Manager who understands treasury instructions | Checks and balances on the Finance Manager's activities should be built into the Project organisation |
| Poor Monitoring; lack of critical Evaluation of consultants' work | Poor Monitoring leads to delays in Project implementation, and lack of critical Evaluation also led to delays as new consultants were appointed | An M&E programme must be designed into the project |

| | | |
|---|---|--|
| <p>Not all the hands-on SFM activities could be completed within the Project's time-frame</p> | <p>More time is needed for the communities to come to terms with, and implement, what to them are very new activities</p> | <p><u>A Phase 2 is needed, to continue with implementation, especially of community forest management aspects, and development of new activities to benefit livelihoods, especially tourism.</u></p> |
|---|---|--|

Annexes

Annex A Implementation status (scheduled versus actual)

| Project Objective / Outputs / Activities (in line with AWP1) | Indicators (from PD) | Means of Verification Baseline of activities | Progress made (% completion of activities & degree of output / objective achieved) | Appraisal time | Actual time |
|---|---|--|---|----------------|-------------|
| Objective 1 <i>To improve SFM through rational forest management plans applying innovative forest management techniques and establishing effective forest management mechanisms</i> | | | | | |
| Output 1: Improvement in community forest management | | | | | |
| Activity 1.1 Baseline survey on resources and socio-economic development Output: Status report on forest resource and community socio-economic status | The resources and the general socio-economic information in the two communities are available for use | Survey reports of the two communities | 100% | | |
| Activity 1.2 Community forest management planning | Participatory approaches and tools are introduced for forest management planning. | Forest management plans for the two communities | 100% | | |

| Project Objective / Outputs / Activities (in line with AWP1) | Indicators (from PD) | Means of Verification Baseline of activities | Progress made (% completion of activities & degree of output / objective achieved) | Appraisal time | Actual time |
|---|--|---|--|----------------|-------------|
| Output: Community Forest Resource Management Plan | | | | | |
| Activity 1.3 Demonstrate sustainable community forest management practices Output: Consultant Report | New silvicultural treatments, integrated traditional knowledge are developed and demonstrated in sites for the two communities | <ul style="list-style-type: none"> • Demonstration schemes for the two communities • Activity reports | 100% <ul style="list-style-type: none"> • Demonstration site not yet completely marked on ground and operating • Two nurseries and related facilities were established, and more seedlings were produced than expected | | |
| Activity 1.4 Establish the participatory community forest management mechanism Output: Consultant Report | Community governance is enhanced. | <ul style="list-style-type: none"> • Co-management agreement for the communities • Activity completion report | 100% In our previous project progress meeting in March 2018 we decided not to include signing of the agreement in the % completion of the activity. (Co-management Agreement drafted but not yet signed) | | |

| Project Objective / Outputs / Activities (in line with AWP1) | Indicators (from PD) | Means of Verification Baseline of activities | Progress made (% completion of activities & degree of output / objective achieved) | Appraisal time | Actual time |
|--|---|--|---|----------------|-------------|
| Objective 2 <i>To enhance the communities' capacity for SFM and livelihood development and to improve the community living conditions by renovating the service infrastructure</i> | One community nursery (10ftx20ft) established for each community | | | | |
| Output 2 Capacity of the community on development enhanced | | | | | |
| Activity 2.1 Alternative livelihood activities Output: Income generating demonstrations | Indicators The selected households get benefit from the livelihood demonstration activities | <ul style="list-style-type: none"> • Activity plans • Completion reports • Income increase of the selected households | 100% | | |
| Activity 2.2 Infrastructure improvement contributing to SFM Output: Improved Infrastructure for the community | Indicators <ul style="list-style-type: none"> • Graveling 7 km of Road from Long Napir to Kpg Bahagia • Cancelled Activity: Build the multi-functional | <ul style="list-style-type: none"> • Transportation conditions between the two communities improved • Accommodation provided for the | 100% 1. Photographs of the completed road 2. Photographs of the completed guesthouse 3. Records of accommodation | | |

| Project Objective / Outputs / Activities (in line with AWP1) | Indicators (from PD) | Means of Verification Baseline of activities | Progress made (% completion of activities & degree of output / objective achieved) | Appraisal time | Actual time |
|---|--|---|---|----------------|-------------|
| | meeting hall for the community <ul style="list-style-type: none"> • Build the guesthouse for community school • Solar energy facilities demonstrated | parents of the pupils <ul style="list-style-type: none"> • Photographs of the completed solar energy facilities • Energy consumption reports • Daily expense decrease of the selected households | 4. Solar energy materials purchased | | |

Annex D Project outputs

List of work done by consultants

| Activity | Outputs | Report Details |
|----------|--|--|
| 1.1 | Baseline Survey on Resources and Socio-economic Development (forest resources assessment) | <i>Report on Forest Resource Assessment at APFNet Project Area, Nanga Medihit, Limbang</i> Ricky Jonathan Alek, May 2018 |
| 1.1 | Baseline Survey on Resources and Socio-economic Development (excluding forest inventory) | <i>A socio-economic study of the communities living within Sungai Medihit watershed, Limbang: Jiram Sidu, Feb. 2017</i> |
| 1.2 | Community Forests Resources Management Plans | <i>APFNet Community Forest Management Plans for Sungai Medihit 2018 – 2023. Project Team, June 2018</i> |
| 1.3 | Report on activities | <i>Demonstrate sustainable community forest management practices: K.G. Pearce, June 2018</i> |
| 1.3.1 | Traditional models for protection and sustainable use of forest resources within communities | See Report on Activity 1.3 |
| 1.3.2 | Map of the two demonstration sites | Figure 2: Location of Kelabit and Penan SFM Demonstration Sites and other conservation areas: In APFNet Community Forest Mgmt Plans for Sungai Medihit 2018 – 2023 |
| 1.3.3 | List of high value tree species for the target villages (Also NTFP species) | Table 7: Summary of the most important resources used by the Kelabit and Penan communities: In APFNet Community Forest Mgmt Plans for Sungai Medihit 2018 – 2023 |
| 1.4 | Establish the Participatory Community Forest Management Mechanism Report on Activity 1.4 | <i>Community-based sustainable forest management of Sungai Medihit watershed, Sarawak, Malaysia.</i> Morris Kapong Senap, May 2018 |
| 1.4.1 | Co-management agreement | <i>Annex B, Community-based sustainable forest management of Sungai Medihit watershed, Sarawak, Malaysia</i> |
| 2.1 | Alternative Livelihood Activities | Project Completion Report, Activities 2.1 & 2.2 Alternative Livelihood Activities <i>Infrastructure and Facilities Development</i> Derek Paran, August 2017 |
| 2.2 | Infrastructure Improvement Contributing to SFM | Project Completion Report, Activities 2.1 & 2.2 Alternative Livelihood Activities <i>Infrastructure and Facilities Development</i> Derek Paran, August 2017 |

Dissemination outputs

- An account of the Project: *Community-based sustainable forest management and rehabilitation of Sg Medihit watershed* for Tropical Forest Updates in March 2016.
- A briefing on the Project to Sarawak State Secretary, 28 April 2016
- A paper: *Community-based sustainable forest management of Sungai Medihit watershed, Sarawak, Malaysia* was delivered by the APFNet Project Manager at the Heart of Borneo (HoB) Seminar themed *Conserving Biodiversity through Sustaining Communities' Livelihood*, held in Kuching, Sarawak, 7-8 Dec. 2016. About 250 participants from various stakeholder groups, both government agencies and NGOs, were invited.
- An introduction to the Project (power point presentation) was shared at the Asia-Pacific Forestry Planning Workshop *Moving Forward with Purpose: Realizing Strategic Forest Planning* held on 28 March, 2018 in Beijing, China
- *Project changes lives of Long Napir residents* - information about the project - was disseminated in Borneo Talk, Vol. 48 Apr-Jun 2018 pages 20-21.
- A poster displayed at the Poster Session of the Malaysian Forestry Conference held from 31st July - 2nd Aug 2018 in Kuching, Sarawak.
- A dissemination video and brochure of key on-the-ground Project activities requested by APFNet have been produced.